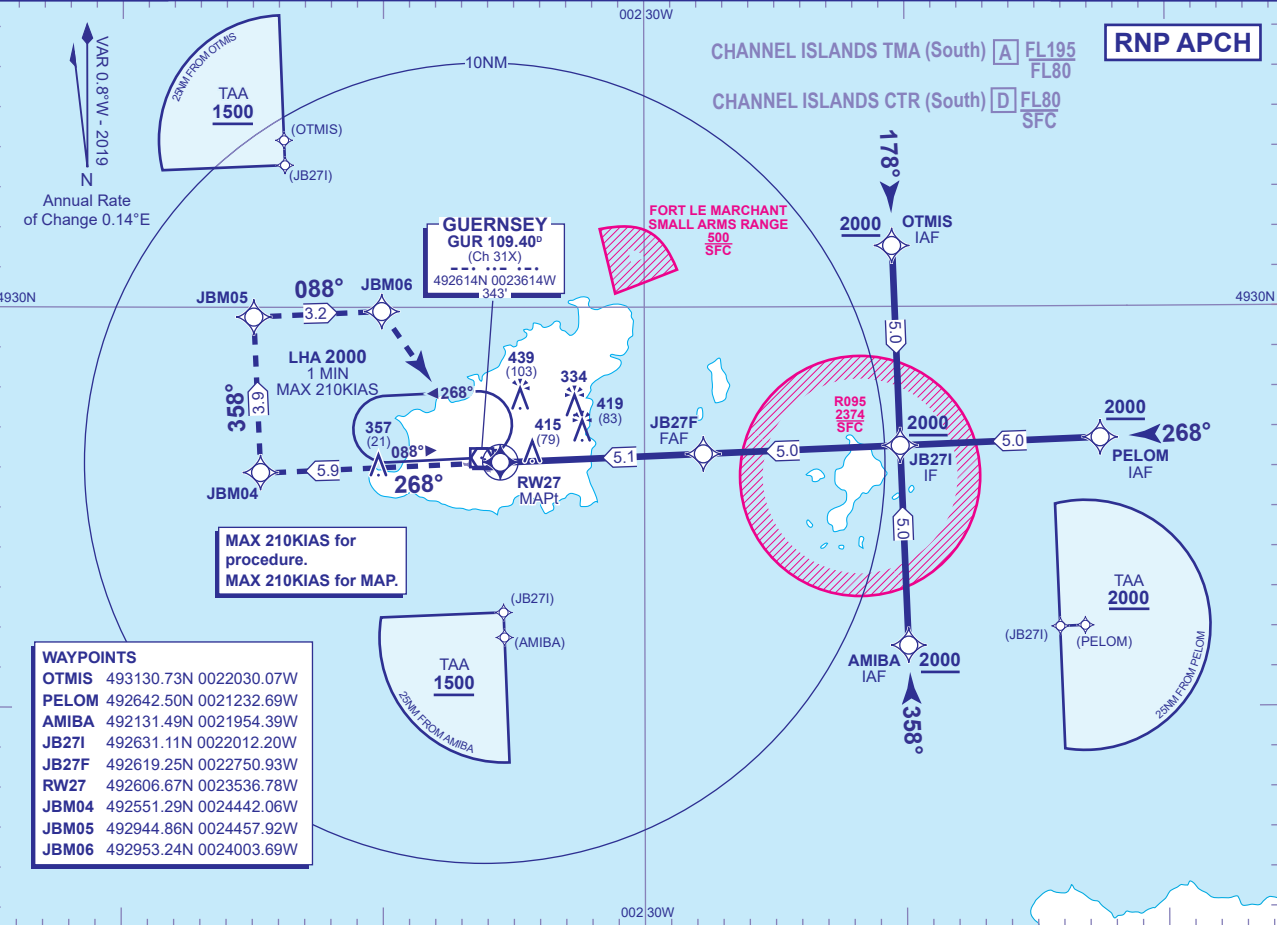


INSTRUMENT APPROACH CHART - ICAO

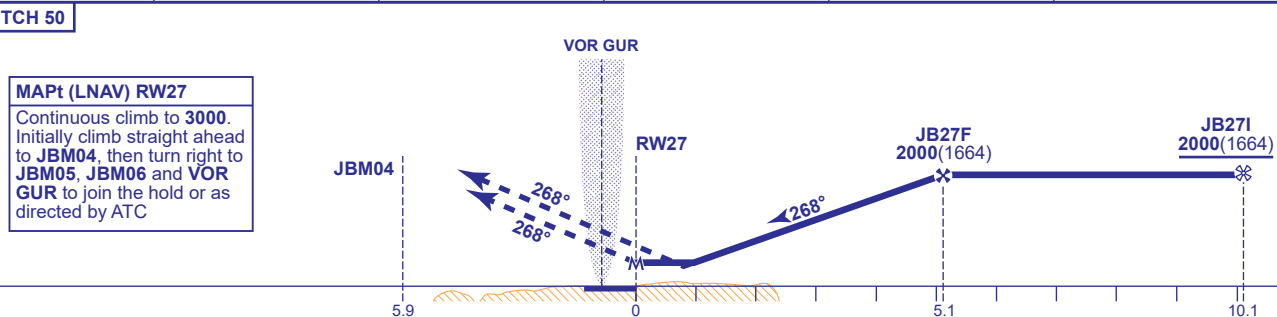
GUERNSEY

RNP  
RWY 27  
(ACFT CAT A,B,C,D)

|  |      |         |                      |                       |                               |  |
|--|------|---------|----------------------|-----------------------|-------------------------------|--|
|  | APP  | 128.655 | GUERNSEY APPROACH    | AD ELEVATION          | 336                           | EGNOS CH 65543 E27A<br>MIN TEMP -5°C<br>TRANSITION ALTITUDE 5000 |
|  | TWR  | 119.955 | GUERNSEY TOWER       | THR ELEVATION         | 336                           |  |
|  | GMC  | 121.805 | GUERNSEY GROUND      | OBSTACLE ELEVATION    | 439 AMSL<br>(103) (ABOVE THR) |  |
|  | RAD  | 124.505 | GUERNSEY RADAR       | BEARINGS ARE MAGNETIC |                               |  |
|  | ATIS | 109.400 | GUERNSEY INFORMATION |                       |                               |  |



| RECOMMENDED PROFILE LPV/VNAV -Vertical Path Angle 3.0° (LNAV 5.24%), 318FT/NM |            |            |            |           |          |
|---|------------|------------|------------|-----------|----------|
| NM to RW27  | 5          | 4          | 3          | 2         | 1        |
| ALT(HGT)  | 1980(1644) | 1660(1324) | 1340(1004) | 1020(684) | 700(364) |



| Aircraft Category  |           | A          | B        | C        | D        | Rate of descent | G/S KT | 160 | 140 | 120 | 100 | 80  |
|--------------------|-----------|------------|----------|----------|----------|-----------------|--------|-----|-----|-----|-----|-----|
| OCA (OCH)          | LPV       | 536(200)   | 536(200) | 536(200) | 536(200) |                 | FT/MIN | 850 | 740 | 640 | 530 | 420 |
|                    | LNAV/VNAV | 660(324)   | 660(324) | 660(324) | 660(324) |                 |        |     |     |     |     |     |
|                    | LNAV      | 680(344)   | 680(344) | 680(344) | 680(344) |                 |        |     |     |     |     |     |
| VM(C)OCA (OCH AAL) |           | Total Area | 740(404) | 830(494) | 930(594) | 1030(694)       |        |     |     |     |     |     |

**NOTE 1** Pilots should 'Request RNP Approach' on first contact with Guernsey.  
**2** VOR GUR required for Missed Approach.  
**3** Authority to penetrate restricted area R095 will be granted by Guernsey ATC prior to start of procedure.  
**4** Aircraft will normally be required to hold not lower than 3000.

**CHANGE (10/23):** GUERNSEY RADAR FREQUENCY.